

CATALOGUE

N&M
Designs El Salvador

*Highlight your brand
is our mission*



INNOVATION

We work to meet the demands of our customers, with the use of state-of-the-art equipment.

STAFF DEVELOPMENT

The human development of our employees is primary for the development and delivery of high-quality products.

SUSTAINABILITY

We optimize the available resources, for the protection and care of our environment.

RESPECT

We recognize there are different opinions and value courteous relationships.

RESPONSIBILITY

Our actions are aimed at fulfilling our commitments to our customers and collaborators.



CORE VALUES



ABOUT US

As M&M Designs, we've built a RICH 60-YEAR LEGACY in CHEMICAL FORMULATION, packaging, and diverse PRINTING TECHNIQUES. Our innovative spirit is demonstrated in our PIONEERING WORK WITH HEAT TRANSFERS and our development of PROPRIETARY INKS and DYES.

We've mastered working with a wide range of materials and have DEVELOPED ADVANCED DIGITAL PRINTING EQUIPMENT.

Our track record includes successful PARTNERSHIPS with various companies and major brands.

Currently, we're focusing on GARMENT INTERIOR HEAT TRANSFER LABELS and EXTERIOR FULL COVERAGE EMBELLISHMENT, further showcasing our commitment to innovation. PARTNERING WITH US means gaining access to our extensive industry knowledge, technical expertise, and collaborative capabilities.

COMPETITIVE ADVANTAGES

01

DEVELOPMENT PRODUCTS

We have the best equipment and certified procedures to enhance your products to the highest standards of quality.

02

TOP MACHINERY

Our state of the art machinery allows us to create products efficiently to meet our customers needs.

03

LEAD TIME

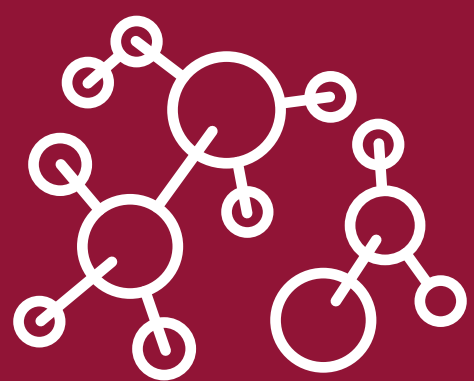
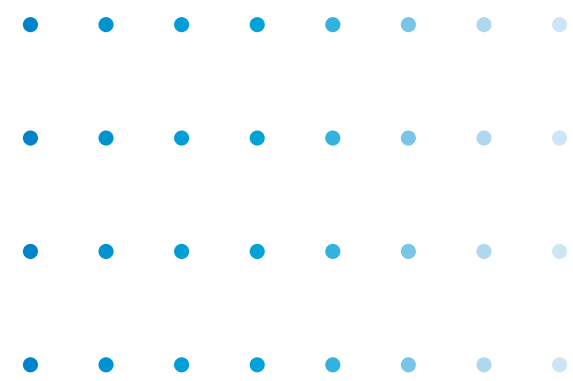
Each of our processes are optimized to deliver our products. As part of our commitment to deliver in the shortest time possible.

04

HANDLING AND LOGISTICS

We create all necessary conditions and facilities to distribute products all around the world. Our location, in Central America, is a competitive advantage as it enables us to deliver products in a short period of time compared to other regions.

GENERAL CHARACTERISTICS



FREE OF HAZARDOUS SUBSTANCES



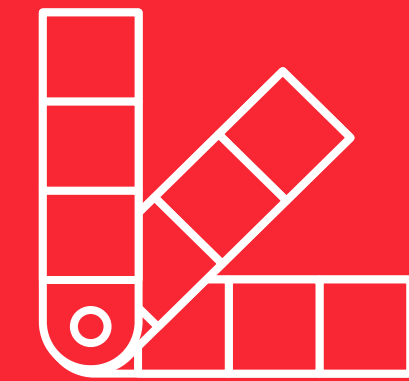
APPLY FAST AT YOUR OWN PACE



LIGHTWEIGHT & SOFT TO THE TOUCH



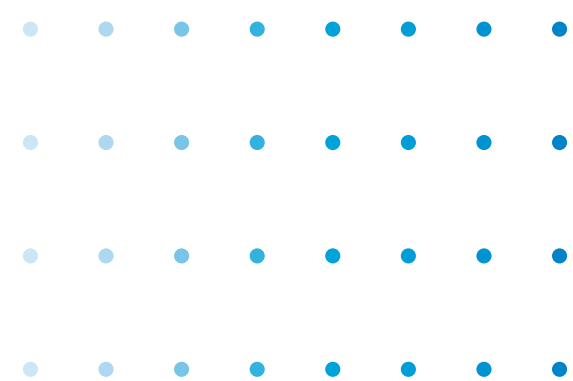
AVAILABLE IN SINGLE PIECES & ROLL-TO-ROLL



SINGLE & MULTIPLE COLOR PRINT



WITHSTAND +25 HOME LAUNDRY CYCLES



We have a wide range of techniques and color matching capabilities thanks to the in-house development of our own formulation of adhesives and inks for all types of natural and synthetic fibers.

FLAT WATER BASE HT

The versatility of these labels makes them an excellent option to brand and identify apparel and footwears. It is perfect to apply on cotton, polyester or blends.

Among the Transfer water based options we have:

- *HIGH GLOSS*
- *SEMI-GLOSS*
- *MATTE*

Each of them is managed to comply with the most stringent quality controls in accordance with our customers requirements.



HIGH GLOSS



SEMI GLOSS

MATTE





SILICONE
SOFT-TOUCH SILICONE
& 3D SILICONE

Our product for garment and shoe fitting PVC free is perfect to stand out your brand. We offer 3 types of qualities of the Silicone technique:
Silicone Flat, Soft-touch Silicone and 3D Silicone.

The versatility and finishing of our silicone products are a plus for your brands and logos. They are specially made to perform in sports fabrics but also for cotton or any other mixture.



ULTRA DURABLE & INDUSTRIAL WORKWEAR



Our products have been designed with high resistance characteristics to be adapted to any type of fabric of high performance such as polyester, nylon, and other mixtures with spandex/lycra and coated fabrics utilized for uniforms and industrial clothing. It is also available with the capacity to block pigments or colorants.

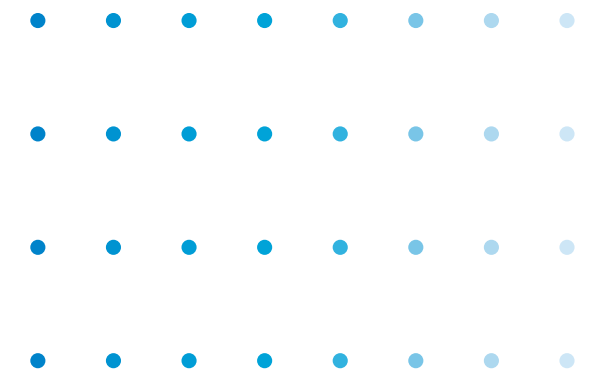
REFLECTIVES & METALLICS



Our reflective and metallic transfers to enhance your logo are perfect for sports clothing. Resistant and of high quality with a variety of colors that meet your requirements. They are specially made to perform in High Stretch and sports fabrics but also to be applied in different mixtures.

ESPECIAL INKS

We have a special team, fully committed to develop your products according to your exigencies. Currently, we are working with fire retardant additive inks that matches the colors you request.



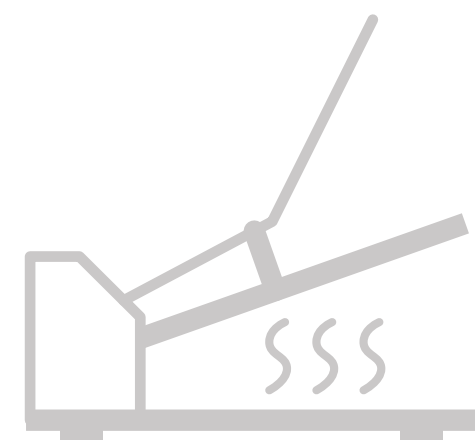
WORKFLOW



1. We recreate your artwork and send it virtually for your approval.

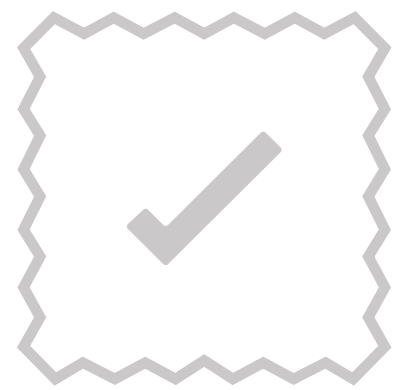


3. We send you the samples for your final approval. You approve and we run production.

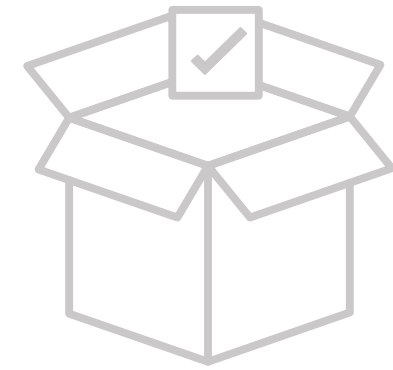


5. Your sewing facility applies the transfers to your garments.

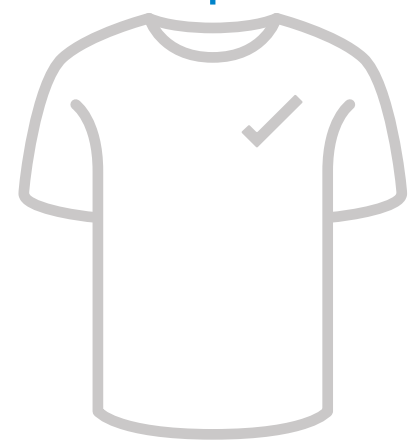
Customer places order



2. We run samples and perform application testing in-house using your fabric.



4. With your production, we ship your heat transfers to your sewing facility.



6. Your garment is embellished!

OUR WORK WORLDWIDE

